

*st. Anton*   
ARLBERG

# Sales Manual

WINTER 2024/25 & SUMMER 2025

Its reputation is legendary!  
The name stands for passion.  
For devotees of Alpine winter sports the Arlberg is the icing of the cake! The Arlberg is the chosen destination and elective homeland of all those souls who have fallen in love with the fascinations of an Alpine winter. St. Anton am Arlberg is a holiday region with a world-wide reputation, and rightfully so.

Between tradition and modernity	4–5
Ski Arlberg	6–7
Piste map Ski Arlberg	8–9
Everything beside skiing	10–11
Your summer in St. Anton am Arlberg	12–15
Popular destinations	15
Summer Card	16–17
Congress	18
Events	19
Partners	22–35
How to get there	36–37



## St. Anton am Arlberg

# Welcome to the Arlberg



The Tyrolean mountain village, with its 2387 inhabitants, together with the neighbouring villages of Pettneu, Flirsch and Strengen, fulfills the highest demands and yet still retains much of its originality and traditional charm. Holiday-makers in St. Anton am Arlberg treasure the Alpine cosiness at 1300 metres altitude as much as the hospitality and international orientation. A mountain village, traditional and modern at the same time. In short, St. Anton am Arlberg is a superlative experience.

The Marketing and PR Team of the Tourist Board is looking forward to your request and will assist you with any further enquiries.

**Katharina Laimer**  
Head of Marketing



**Maria Lechleitner**  
Marketing

Winter

# Between tradition and modernity



It doesn't need much to be able to enjoy blissful moments in the mountains. It's about the special combination and therefore St. Anton am Arlberg inspires each year during the cold season its guests with a varied offer for young and old.

Perfectly groomed slopes, Tyrolean hospitality, a fantastic mountain backdrop, musical and sporting event highlights – these are the cornerstones that make the cradle

of Alpine skiing so unmistakable and inspire guests from all over the world every year.

Those who travel to St. Anton am Arlberg holiday region in the winter enter a Winterwonderland which has enjoyed a world-wide reputation not only since hosting the Alpine Ski World Championships in 2001. With the foundation of the Arlberg Ski-Club in 1901, which is still one of the largest and biggest of its kind, and the opening of the first ski school in the world 1921 by ski pioneer Hannes Schneider, St. Anton am Arlberg has always been the non-plus ultra in the history of skiing. Arlberg's charisma





has an even greater and more enticing allure since winter 2016/17. The gondolas of the new Flexenbahn cable car connecting Tirol with Vorarlberg for the very first time in what is now Austria's largest connected ski resort.

Yet above all else the Arlberg is a hallmark and synonym for one of the world's best skiing regions. Special feature: The varied and extensive ski area, marked ski runs for every level of ability, untouched powder snow slopes and highly varied backcountry terrain. Holidaymakers can ski here from morning until evening without ever touching the same ski run twice. Freeriding skiers and snowboarders meet at the Funpark on the Rendl. And then: the steep slope in the Schindlerkar or the breathtaking view from the Valluga platform at 2.811 m above sea level excite the pulse of those who have

grown up with skis strapped to their feet. Visitors can enjoy all these internationally renowned slopes and runs and many others besides with one and the same lift pass. And with the free shuttle buses in each town, winter sports lovers are as flexible as they need to be.

#### **GOOD TO KNOW**

**85 cable cars and lifts**  
**more than 300 km of marked ski runs**  
**200 km of open freeride terrain**  
**1.304 – 2.811 m above sea level**  
**2.387 inhabitants**  
**ca. 14.500 guest beds in the whole region**



**Winter**

# More than just a ski area

The facts of Ski Arlberg speak for themselves: more than 300 kilometres of marked runs, 200 kilometres of off-piste variations, 85 lifts, 5 villages. Since the 2016/17 winter season, the five Arlberg villages have grown together to form a gigantic ski area. The construction of the Flexenbahn marked a milestone in the history of the Arlberg and created the largest connected ski area in Austria.

For winter sports enthusiasts, this offers almost endless possibilities to experience the mountains with all their facets. However, the Arlberg has long been fascinating not only because of its size, but also because of its history. It owes its status as the „Cradle of Alpine skiing“ to the unique skiing culture of the region. Among other things, pioneer Hannes Schneider with his Arlberg technique and the founding of the Ski-Club Arlberg in 1901 contributed to its worldwide reputation. To this day, the club

has produced numerous top athletes and set milestones for Alpine skiing in its more than 100-year history.

## Run of Fame

Arlberg celebrates its ski pioneers and legendary ski stars with the Run of Fame, an equally new and spectacular ski circuit. It lures with the challenge of 85 kilometres of runs and an incredible 18,000 metres in altitude difference. The circuit leads through the entire Arlberg ski area and reminds skiers of the many great sons and daughters of Arlberg in the Hall of Fame at the Flexenbahn-Topstation.

### Contact Arlberger Bergbahnen

Arlberger Bergbahnen AG

Kandaharweg 9, 6580 St. Anton am Arlberg

T. +43 (0)5446 2352-0

[office@abbag.com](mailto:office@abbag.com)

[www.arlbergerbergbahnen.com](http://www.arlbergerbergbahnen.com)

# TICKETGUIDE

## SKIPASSE WINTER 2024/25



### Hauptsaison

21.12.24 bis 04.04.25

Tag <sup>1</sup>	Erwachsene	Kinder <sup>3,4</sup>	Jugend <sup>5</sup> / Senioren <sup>5</sup>	Schneemann <sup>5,6</sup>	Senior-Aktiv <sup>5</sup>
<b>Schnuppern ab 15 Uhr<sup>4</sup></b>	<b>36,00</b>	<b>36,00</b>	<b>36,00</b>	–	–
<b>½ ab 12 Uhr<sup>4</sup></b>	<b>60,00</b>	<b>36,00</b>	<b>54,00</b>	–	–
<b>1<sup>4</sup></b>	<b>78,00</b>	<b>47,00</b>	<b>72,00</b>	<b>11,00</b>	<b>39,00</b>
<b>1½ ab 12 Uhr</b>	<b>130,00</b>	<b>78,00</b>	<b>118,00</b>		<b>58,00</b>
<b>2</b>	<b>155,00</b>	<b>93,00</b>	<b>141,00</b>		<b>76,00</b>
<b>3</b>	<b>230,00</b>	<b>138,00</b>	<b>205,00</b>		<b>111,00</b>
<b>4</b>	<b>301,00</b>	<b>181,00</b>	<b>261,00</b>		<b>148,00</b>
<b>5</b>	<b>366,00</b>	<b>219,00</b>	<b>316,00</b>		<b>186,00</b>
<b>6</b>	<b>423,00</b>	<b>254,00</b>	<b>365,00</b>		
<b>7</b>	<b>475,00</b>	<b>286,00</b>	<b>409,00</b>		
<b>8</b>	<b>524,00</b>	<b>314,00</b>	<b>450,00</b>		
<b>9</b>	<b>573,00</b>	<b>343,00</b>	<b>493,00</b>		
<b>10<sup>7</sup></b>	<b>618,00</b>	<b>370,00</b>	<b>532,00</b>		
<b>11<sup>7</sup></b>	<b>665,00</b>	<b>398,00</b>	<b>572,00</b>		
<b>12<sup>7</sup></b>	<b>703,00</b>	<b>422,00</b>	<b>604,00</b>		
<b>13<sup>7</sup></b>	<b>738,00</b>	<b>443,00</b>	<b>634,00</b>		
<b>14<sup>7</sup></b>	<b>771,00</b>	<b>462,00</b>	<b>661,00</b>		
<b>Gültigkeitszeitraum Wintersaison 2024/25</b>					
<b>Ski Arlberg-Card</b>	<b>1.170,00</b>	<b>675,00</b>	<b>999,00</b>	<b>11,00</b>	<b>218,00</b>
<b>Tagwahl 15 Punkte<sup>2</sup></b>	<b>378,00</b>	<b>224,00</b>	<b>333,00</b>	–	–
<b>Tagwahl 30 Punkte<sup>2</sup></b>	<b>709,00</b>	<b>418,00</b>	<b>644,00</b>	–	–

Kind 2009-2016 | Jugend 2005-2008 | Senioren 1951-1960 | Schneemann ab 2017 und jünger | Senior Aktiv 1950 und älter

### Sonstige Tarife

**Skipass-Verlängerungstage:** Bearbeitungsgebühr je Verlängerung: Erwachsene/Jugendliche/Senioren: 15,00; Kinder: 9,00; Die Aufbuchung von Skipass-Verlängerungstagen ist gegen Aufzahlung bei personalisierten Skipässen ab 6 Tage Gültigkeit bis zu max. 21 Tage Gesamtgültigkeit möglich. Noch nicht personalisierte Skipässe müssen für eine beabsichtigte Skipassverlängerung spätestens am 4. Gültigkeitstag personalisiert werden. Foto genügt.

**Sonnenabo Arlberg – für Gäste ohne Wintersportgerät: 7 Tage (mit Foto): Erwachsene 184,50; Kinder 110,00;** gültig bei folgenden Liften und Bahnen: **Lech / Oberlech / Zürs:** Zugerberg, Rüfikopf, Schlegelkopf, Schlosskopf, Bergbahn Oberlech bis 18:00 Uhr, Petersboden, Weibermahd, Seekopf, Trittkopf I und II, Zürsersee und Fleckenbahn, St. Anton / St. Christoph / Stuben: Gälzig, Gampen, Nasserein, Valluga I und II, Kapall, Rendl, St. Christophbahn und Albonabahn I. Klösterle/Sonnenkopf/Sonnenkopfbahn.

**Mischpreisberechnung:** Fällt die Gültigkeit eines Skipasses in mehrere Saisonzeiten, wird ein Mischpreis berechnet.

**Der Skipass ist nicht übertragbar.** Der nachträgliche Umtausch gegen einen anderen Skipass und die Änderung der Gültigkeitsdauer sind nicht möglich.

**Die Betriebszeiten** der einzelnen Lifte und Bahnen sind im Internet unter [www.skiarlb.org.at](http://www.skiarlb.org.at) sowie bei den Skipasskassen bzw. den jeweiligen Anlagen erhältlich.

**3Tälerpass:** Für Inhaber von Saisonkarten oder Mehrtageskarten vom 3Tälerpass gibt es attraktive Ski Arlberg-Wachselsgeskarten. Nähere Informationen unter [www.skiarlb.org.at](http://www.skiarlb.org.at).

### Tarif/Saisonzeiten/Bestimmungen

Änderungen möglich; Vorläufiger Stand per September 2024.

Den hier angeführten Preisen liegt eine Kalkulation mit Stand September 2024 zugrunde. Tatsächlich kann jedoch die weitere Entwicklung der für diese Kalkulation maßgeblichen Faktoren (z.B. Energiekosten, Inflation etc.) zum momentanen Zeitpunkt nicht abgeschätzt werden. Daher kann es unter Umständen notwendig werden, die Preise bei entsprechenden Entwicklungen neu zu kalkulieren. Wir müssen uns daher vorbehalten, dass die Skipasspreise zu einem späteren Zeitpunkt, natürlich jedenfalls vor dem Kauf eines Skipasses, angepasst werden. Jedenfalls ist dann der zu diesem (späteren) Zeitpunkt verlaubte Preis zu entrichten. Wir bitten im Übrigen um Beachtung unserer AGB unter [www.skiarlb.org.at](http://www.skiarlb.org.at)

### Allgemeines

Zahlungsmöglichkeiten:



### Schneekristall

04.12.24 bis 08.12.24<sup>1</sup>

Erwachsene	Kinder <sup>3,4</sup>	Jugend <sup>5</sup> / Senioren <sup>5</sup>
<b>36,00</b>	<b>25,00</b>	<b>36,00</b>
<b>42,00</b>	<b>25,00</b>	<b>38,00</b>
<b>55,00</b>	<b>32,00</b>	<b>49,00</b>
<b>89,00</b>	<b>53,00</b>	<b>81,00</b>
<b>107,00</b>	<b>66,00</b>	<b>96,00</b>
<b>159,00</b>	<b>94,00</b>	<b>141,00</b>
<b>208,00</b>	<b>124,00</b>	<b>179,00</b>
<b>251,00</b>	<b>152,00</b>	<b>217,00</b>
<b>292,00</b>	<b>174,00</b>	<b>251,00</b>
<b>329,00</b>	<b>196,00</b>	<b>282,00</b>
<b>366,00</b>	<b>217,00</b>	<b>311,00</b>

### Wedel- & Sonnenskiwochen

09.12.24 bis 20.12.24 und  
05.04.25 bis 22.04.25<sup>1</sup>

Erwachsene	Kinder <sup>3,4</sup>	Jugend <sup>5</sup> / Senioren <sup>5</sup>
<b>36,00</b>	<b>36,00</b>	<b>36,00</b>
<b>59,00</b>	<b>36,00</b>	<b>54,00</b>
<b>74,00</b>	<b>43,00</b>	<b>67,00</b>
<b>117,00</b>	<b>68,00</b>	<b>106,00</b>
<b>137,00</b>	<b>81,00</b>	<b>126,00</b>
<b>196,00</b>	<b>116,00</b>	<b>174,00</b>
<b>254,00</b>	<b>148,00</b>	<b>222,00</b>
<b>306,00</b>	<b>179,00</b>	<b>267,00</b>
<b>357,00</b>	<b>208,00</b>	<b>310,00</b>
<b>401,00</b>	<b>234,00</b>	<b>348,00</b>
<b>441,00</b>	<b>260,00</b>	<b>385,00</b>

### Vormittags-/Nachmittags-/Stundenkarten Tageskarten mit Rückvergütung

Tage/Stunden	Erwachsene	Kind <sup>3,4</sup>	Jugend <sup>5</sup>	Senioren <sup>5</sup>
<b>1<sup>4</sup></b>	<b>83,00</b>	<b>49,00</b>	<b>75,00</b>	<b>75,00</b>
<b>Rückvergütung</b>				
<b>bis zu 2 h</b>	<b>39,00</b>	<b>23,00</b>	<b>37,00</b>	<b>37,00</b>
<b>bis zu 3 h</b>	<b>25,00</b>	<b>15,00</b>	<b>25,00</b>	<b>25,00</b>
<b>bis zu 4 h</b>	<b>16,00</b>	<b>10,00</b>	<b>14,00</b>	<b>14,00</b>

Die Ausnütnungszeit läuft ab der ersten Benützung/Registrierung der Stundenkarte an einem Liftzugang und endet zum Zeitpunkt der persönlichen Rückgabe an einer Skipasskassa. ACHTUNG: Keine Rückgabe an einem Verkaufsautomaten oder online bzw. beim Vermieter möglich!

### Anfängerkarten für Übungs- & BabyLifte

Tag	Erwachsene	Kind <sup>3,4</sup>	Jugend <sup>5</sup>	Senioren <sup>5</sup>
<b>½<sup>4</sup> ab 12 Uhr</b>	<b>34,00</b>	<b>24,00</b>	<b>34,00</b>	<b>34,00</b>
<b>1<sup>4</sup></b>	<b>44,50</b>	<b>31,50</b>	<b>44,50</b>	<b>44,50</b>
<b>30-Punkte<sup>4</sup></b>	<b>40,00</b>	<b>29,00</b>	<b>40,00</b>	<b>40,00</b>

**30-Punktekarte für Einsteiger – Punkteabbuchung:** St. Anton: Nassereinlift = 2, Kindlifeld = 2, Muldenlift = 1, Fangbahn = 6; St. Christoph: Maensee = 3; Stuben: Angerlift = 1, Walchlift = 2; Zürs: Übungslift = 3, Babylift = 1; Lech: Hinterwies = 2, Flügen = 2; Oberlech: Bergbahn Oberlech = 5, Übungslift Oberlech = 2. Die 30-Punktekarte ist übertragbar und bis Saisonende gültig. Allfällige Restpunkte können nicht zurückgenommen werden. ½ und 1 Tageskarte für Übungs- und BabyLifte gültig an allen Liften wie 30-Punktekarte, nur Bergbahn Oberlech max. 2 Fahrten täglich.

- Saisonbeginn:** 04.12.24 (eingeschränkter Fahrbetrieb möglich); Warth/Schröcken: 06.12.24
- Saisonende:** 22.04.25 (eingeschränkter Fahrbetrieb möglich); Warth/Schröcken: 21.04.25; Klösterle-Sonnenkopf: 13.04.25
- Tagwahlskipässe** sind personenbezogen (Foto) und daher nicht übertragbar. Die Punkteverwertung erfolgt automatisch bei jedem Tages-Ersteintritt an den elektronischen Lesegeräten, wobei die Uhrzeit des Lesers maßgebend ist. Bitte die Anzeige beachten! Punkteabbuchung: Vor 11:50 Uhr = 3 Punkte; nach 11:50 Uhr = 2 Punkte; nach 15:00 Uhr = 1 Punkt. Tagwahlskipässe sind nur in jener Wintersaison gültig, in welcher sie ausgestellt wurden. Aus Kulanz bieten wir Folgendes an: Restpunkte aus der Vorsaison können bis zum 10.01. der folgenden Wintersaison verbraucht werden.
- Bei Kauf eines neuen Skipasses bis zum 10.01. erfolgt eine Anrechnung von Punkten aus der Vorsaison (ältere Punkte verfallen ausnahmslos!) höchstens mit der gleichen Punkteanzahl, die der neu gekaufte Tagwahlskipass hat. Nach dem 10.01. der laufenden Wintersaison sind Restpunkte aus den vorhergehenden Wintersaisons ausnahmslos verfallen. Ab diesem Datum ist auch bei einem neuerlichen Skipasskauf keine Anrechnung von Restpunkten mehr möglich. Es gelten die Tarifbedingungen des Arlberg-Skipasspools.
- Skipässe im Vorverkauf:** Für den folgenden Tag. Die Benützung des Skipasses ist ab 16:00 Uhr möglich. Die Skipässe sind an aufeinanderfolgenden Tagen gültig.
- Bei Limitierung** in Lech-Oberlech-Zürs und/oder Warth-Schröcken werden diese Karten in St. Anton, St. Christoph und Stuben sowie am Sonnenkopf mit Einschränkung der Gültigkeit auf die entsprechenden Bereiche ausgegeben.
- Altersnachweis erforderlich.**
- Die Beförderung von Kindern** erfolgt nach Maßgabe der Beförderungsbedingungen.
- Ab 10 Tagen Foto erforderlich** (kostenlos an der Kassa).

Alle Preise in € und inkl. Ust. zuzüglich € 5,- Depotgebühr für die Ski-Arlberg-Chipkarte. Es gelten die AGB's von Ski Arlberg. Änderungen der Preise und sonstiger Bestimmungen vorbehalten! Chipkarte verbleibt im Eigentum von Ski Arlberg. Der gesamte Tarif ist unter [www.skiarlb.org.at](http://www.skiarlb.org.at) ersichtlich.











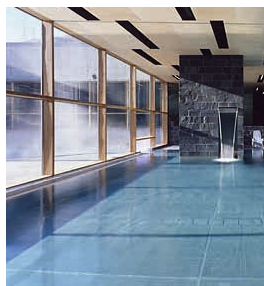


## Winter

# Everything beside skiing

St. Anton am Arlberg is a holiday region with a world-wide reputation, and rightfully so. A superlative winter sports area with excellent guest services, Ferris wheel cable car, the Arlberg WellCom wellness centre, the finest gourmet cuisine, the multi-functional sports centre arl.park and numerous events which all contribute towards an unforgettable vacation.

- 40 km of prepared cross country trails
- Numerous tobogganing sleds
- Ice skating and curling
- Winter hiking
- Snowshoe hiking
- Torchlight hike
- Out and about with the huskies
- Horse-drawn sleigh rides
- Arlberger winter climbing route – the only one in Tyrol
- Paragliding
- Multi-functional sports centre arl.park with indoor Trampoline Park
- Wellness center Arlberg WellCom



- Yoga e.g. in the yoga room arlflow
- Museum St. Anton am Arlberg
- Arlberg Escapes (Escape Room)
- Gallery artbox and Kunstraum Pettneu
- Shopping-Tour in the pedestrian zone of St. Anton am Arlberg

... and many more





# Region with endless possibilities

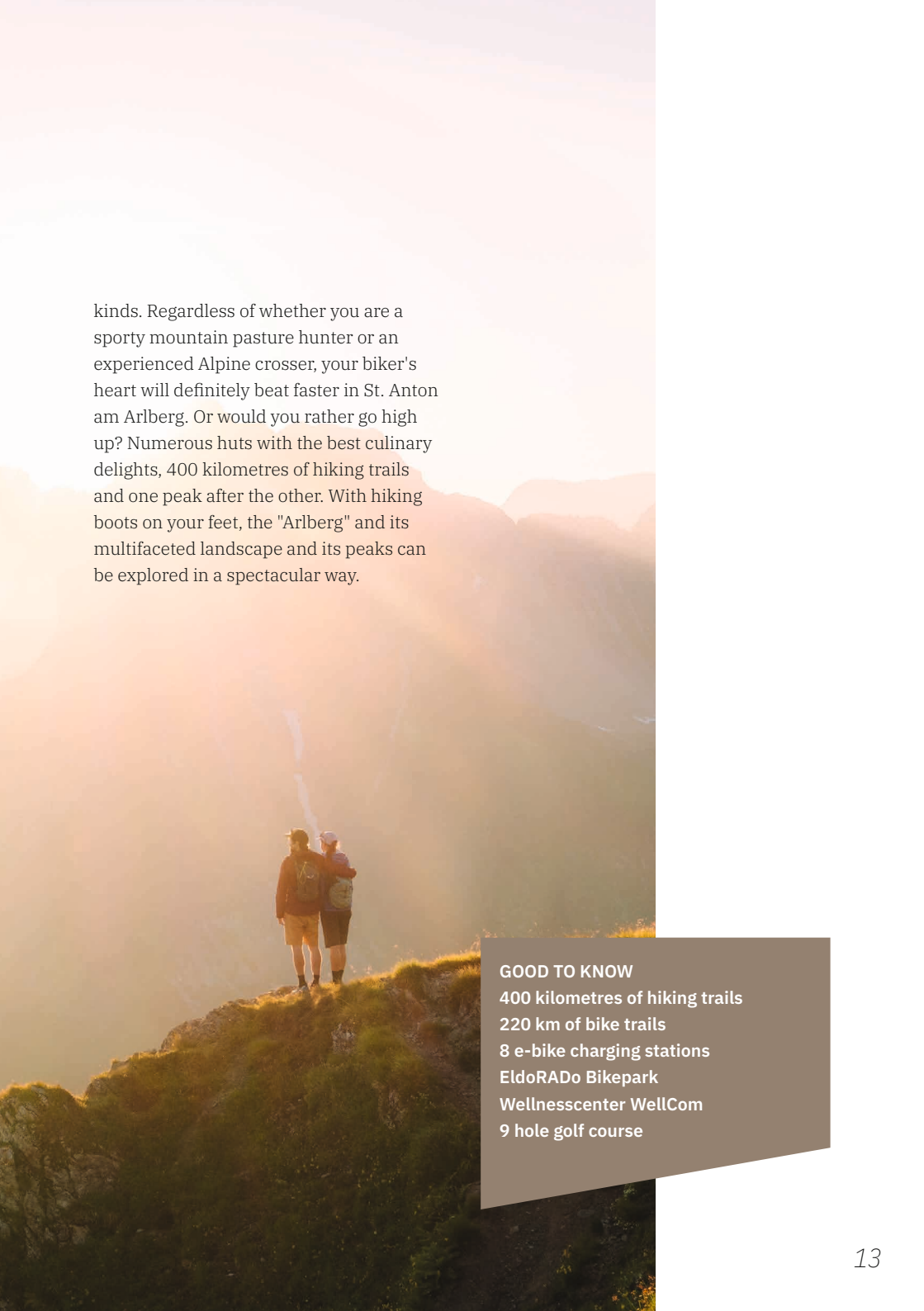
**The Tyrolean mountain village with its 2387 inhabitants and the neighbouring villages of Pettneu, Flirsch and Strengen also meets the highest demands in summer and has retained much of its originality and traditional charm.**

Visitors in St. Anton am Arlberg appreciate the Alpine cosiness at an altitude of 1300 metres just as much as the hospitality and internationality. A mountain village, traditional and modern at the same time, with the nature of a gigantic summit landscape and the amenities of a sprawling holiday resort.

Green meadows instead of white slopes: During the summer season, St. Anton am

Arlberg reveals a wealth of facets for sports on the mountain. Between yoga sessions under the open sky and spectacular tours hiking or biking, summer guests experience the cradle of Alpine skiing as an oasis of well-being and a place of strength amidst a breathtaking Alpine natural backdrop. All those who are looking for untouched high valleys, Tyrolean hospitality and a great variety of sports are in the right place here. Surrounded by the mighty 3000-metre peaks of the Verwall Group and the rugged cliffs of the Lechtal Alps, adventures can be ventured far away from the hustle and bustle.

The region around St. Anton am Arlberg with the villages of Pettneu, Flirsch and Strengen offers an extensive network of 220 kilometres of trails for bikers of all



kinds. Regardless of whether you are a sporty mountain pasture hunter or an experienced Alpine crosser, your biker's heart will definitely beat faster in St. Anton am Arlberg. Or would you rather go high up? Numerous huts with the best culinary delights, 400 kilometres of hiking trails and one peak after the other. With hiking boots on your feet, the "Arlberg" and its multifaceted landscape and its peaks can be explored in a spectacular way.

#### GOOD TO KNOW

- 400 kilometres of hiking trails
- 220 km of bike trails
- 8 e-bike charging stations
- EldoRAdo Bikepark
- Wellnesscenter WellCom
- 9 hole golf course

## Summer

# Mountain sports for everyone

Whether you are hiking, climbing, walking, biking, rafting, kayaking, swimming, playing golf, paragliding, enjoying Alpine festival with music or just relaxing - pleasure is here in the first place.

- 400 km kilometres of marked walking paths
- Theme trails
- Senn's WonderWanderWay
- Verwall valley
- 220 km bike trails
- EldoRADO bike area
- Climbing area
- Arlberg via ferrata
- Archery
- 9 hole golf course
- Football pitch
- Volleyball court
- Miniature golf
- Art galleries



- The Gand mine
- Museum St. Anton am Arlberg
- Yoga at the arl.flow
- Multi-functional sports centre arl.park with trampoline hall







- Wellness center Arlberg WellCom
- Wellnesspark Arlberg Stanzertal
- Escape Room Arlberg Escape in St. Anton am Arlberg

... and many more

## Destinations around St. Anton am Arlberg

A trip to Innsbruck? A day out at the Schloss Neuschwanstein castle? Summer and winter is plenty to see around St. Anton am Arlberg.



© Swarovski Kristallwelten

- |   |            |
|---|------------|
| ■ Innsbruck                             | ca. 100 km |
| ■ Swarovski Crystal World               | ca. 115 km |
| ■ World's largest lake stage in Bregenz | ca. 95 km  |
| ■ Kaunertal glacier                     | ca. 50 km  |
| ■ Lake Constance with Mainau island     | ca. 150 km |
| ■ Meran                                 | ca. 180 km |
| ■ Silvretta Hochalpenstraße             | ca. 150 km |

## Summer

# Your summer, your benefits!

In St. Anton am Arlberg, our hosts give their guests a mobility card with numerous inclusive offers free of charge from the first night - ideal for exploring the region conveniently and flexibly. For all those who want to enjoy their stay to the full, there is the St. Anton Summer Card Premium: With this card, you have unlimited access to many leisure activities - including the region's cable cars and swimming pools!

### Inclusive services of the mobility card from the 1st night:

- Free regional buses
- 1x admission to the Gand mine
- 1x torchlight hike
- 1x admission to the local museum
- 1 guided hike according to the weekly programme
- Children's programme
- 1 x admission to Tyrolean evening
- Guided tours according to the weekly programme





## Endless holiday enjoyment with the St. Anton Summer Card Premium

For all those who want to get even more out of summer in St. Anton, the St. Anton Summer Card Premium can be booked as an additional package. Guests with this card also enjoy numerous discounted extra services in various partner businesses.

Summer Card Premium	adults	children (7–16 J.)
3 days	€ 79,00	€ 39,50
5 days	€ 99,00	€ 49,50
7 days	€ 119,00	€ 59,50



More information:  
[www.sommerkarte.at](http://www.sommerkarte.at)



Subject to change

With the Summer Card Premium, you can use the included services for three, five or seven consecutive days. Some hosts already offer the Summer Card Premium included. If this is not the case, the card can be purchased in all tourist offices and at the ticket offices of the Arlberg mountain railways.

### Included services Summer Card Premium

- Mountain railways: Unlimited
- Swimming fun: Unlimited in the Arlberg
- WellCom and Wellnesspark Pettneu
- Activities according to the weekly programme
- Bonus on e-bike hire
- 1x green fee golf course
- 1x e-motocross in the EldoRADO bike area
- Many other inclusive services



## Work & recovery

# Congresses & events

Balancing work and recreation. Crisp mountain air, rugged peaks and stunning natural beauty energize attendees and infuse them with open-sky creativity, while state-of-the-art meeting spaces keep them connected. From contemporary conference spaces to intimate boardrooms, our 15 unique locations spark creativity as boundless as their surroundings.

We are here to help you plan it all—from group lodging and catered events to a variety of outdoor activities. Elevate engagement and inspire camaraderie with one-of-a-kind outdoor escapades, including hut-to-hut walks, climbing adventures, mountain bike tours or rafting trips. Gather the group in the winter for snowshoe treks, night sledging and skiing.

### Contact congresses & events

Franziska Spiss & David Urbanz  
Tourismusverband St. Anton am Arlberg  
Dorfstraße 8, A-6580 St. Anton am Arlberg  
T. +43 5446 2269-54  
[mice@stantonamarlberg.com](mailto:mice@stantonamarlberg.com)  
[www.arlberg-wellcom.at](http://www.arlberg-wellcom.at)  
[www.stantonamarlberg.com](http://www.stantonamarlberg.com)

### FACTS

5 buildings directly in the centre  
15 unique locations  
suitable for 10 to 2.000 people  
overnight stay in the region  
competent hall management &  
technology partners  
exclusive catering partner  
event planning team



# events

## Eventhighlights in winter 2024/25

01. 08. 15. 21. 22. December	"Adventzauber" – Christmas Magic
06. – 08. December	STANTON SKI OPEN
13. – 15. December	Arlberg Pickleball Championship
27. December	Wilten Boys Choir Concert
30. December	Skishow "Schneetreiben" (every Wednesday from 10 January)
03. January	Arlberger New Year's Concert
11. – 12. January	Audi FIS Skiweltcup Women
30. März – 13. April	Tanzcafé Arlberg - Music Festival
19. April	„Der Weisse Rausch“ – The White Thrill

## Eventhighlights in summer 2025

27. – 29. June	Mountain Sports Festival
21. June	Montafon Arlberg Marathon
01. – 03. August	Arlberg Giro
20. – 23. August	Film Festival St. Anton
30. August	Arlberger Wadlbeisser
04. – 07. September	Mountain Yoga Festival St. Anton am Arlberg
mid september	Cattle Drive

[www.stantonamarlberg.com/events](http://www.stantonamarlberg.com/events)

Subject to change















Arrive & revive  
— accommo-  
dations

## Anthony's Life & Style Hotel \*\*\*\*

Fam. Pangratz  
Dorfstraße 3  
6580 St. Anton am Arlberg  
T. +43 5446 42600  
hotel@anthonys.at  
www.anthonys.at

Boasting a prime location at the entrance to St. Anton's vibrant pedestrian zone, and just a stone's throw from the ski lifts, Anthony's Life & Style Hotel brings together luxurious accommodation, exquisite and varied culinary delights and enjoyable shopping.



Winter

Summer

Number of rooms total

on request

on request  
on allotment

47 rooms and suites

## Hotel Die Arlbergerin \*\*\*\*

Barbara und Mathias Kometer  
St. Jakober Dorfstraße 11  
6580 St. Anton am Arlberg  
T. +43 5446 2243  
hotel@diearlbergerin.com  
www.diearlbergerin.com

Hotel Die Arlbergerin the newly renovated adults friendly hotel in St. Anton am Arlberg. Only 15 minutes from the center in a quiet location. Free ski-bus stop directly in front of the hotel.



Winter	Summer	Number of rooms total
Channel Connect / GDS	Channel Connect / GDS	28 rooms

## Hotel Grieshof \*\*\*\*

Fam. Katrin und Stefanie Alber  
Im Gries 20  
6580 St. Anton am Arlberg  
T. +43 5446 2331  
info@grieshof.com  
www.grieshof.com

This family-run hotel is located right in the center of St. Anton am Arlberg, only a 3-minute-walk to the ski lifts. The tyrolean quaintness combined with modern comfort creates a very fine ambience. In our Wellness area you will find a Sauna, Turkish bath, Infrared cabine, Indoor Swimming pool, Jacuzzi and a hydro-massage-bed. Parking and Wifi connection is free of charge.



Winter	Summer	Number of rooms total
on request	on request on allotment	44 rooms

Kaminstube am Moos \*\*\*\*

Maria und Herbert Kössler  
Mooserweg 14  
6580 St. Anton am Arlberg  
T. +43 5446 2681  
info@kaminstube.com  
www.kaminstube.com



Winter

Summer

Number of rooms total

on request

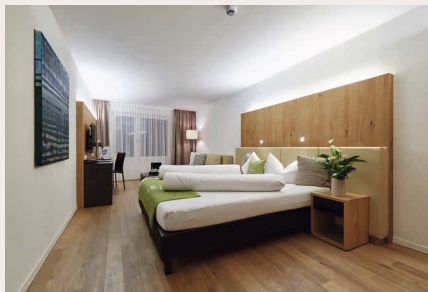
on request

24 rooms

Welcome to the Kaminstube at Moos in St. Anton am Arlberg!  
Get ready for the perfect ski-in/ski-out location, a parking spot right at the hotel, a delightful breakfast buffet, cozy and high-quality rooms, our splendid wellness area, and full range of services from morning till late evening.  
Take in the panoramic view on the sun terrace during your skiing break and indulge in a delicious lunch or relaxed après-ski atmosphere. In our cozy Alpine-style lounge, taste our excellent wines and hearty delicacies. The joy of indulgence finds its home here!

m3 Hotel \*\*\*\* & mali

Fam. Kaser  
Dorfstraße 56 – 58  
6580 St. Anton am Arlberg  
T. +43 5446 2968  
info@m3hotel.at  
www.m3hotel.at



Winter

Summer

Number of rooms total

on request

on request

39 rooms

Modern, stylish and located in the middle of the pedestrian zone of St. Anton am Arlberg, the 4\*\*\*\* m3Hotel makes every holiday dream come true. Spectacularly spacious rooms with private infrared saunas, eye-opening breakfast at m3 SkyLounge, accompanied by jaw dropping views of St. Anton and relax in the newly built SkySpa with saunas, steam bath and relaxation lounge high above the roofs of St. Anton. Enjoy course after course of mouth-watering fare at m3 Restaurant Hazienda. It all awaits you at m3 Hotel, where the real journey begins after you arrive.



# Hotel Maiensee \*\*\*\*

Fam. Traxl  
Nr. 24  
6580 St. Christoph am Arlberg  
T. +43 5446 2804  
info@maiensee.com  
www.maiensee.com



Winter

Summer

Number of rooms total

on request

on request

7 single rooms  
25 double rooms  
10 triple rooms

# Hotel Garni Dr. Otto Murr \*\*\*\*

Alexandra Murr  
Dorfstraße 122  
6580 St. Anton am Arlberg  
T. +43 5446 2430  
info@hotel-murr.at  
www.hotel-murr.at



Winter

Summer

Number of rooms total

on request

on request

4 single rooms  
8 double rooms  
6 suites

## Hotel Alpina \*\*\*S

Fam. Falch  
Pettneu 82  
6574 Pettneu am Arlberg  
T. +43 5448 8404  
[hotel@alpina-arlberg.at](mailto:hotel@alpina-arlberg.at)  
[www.alpina-arlberg.at](http://www.alpina-arlberg.at)



Winter

Summer

on request

on request

Number of rooms total

9 single rooms  
27 double rooms  
2 family suites

The \*\*\* Superior Hotel Alpina in Pettneu am Arlberg welcomes you with Tyrolean coziness and modern comfort. Its central quiet location allows you to reach the Arlberg ski lifts in just 8 minutes by ski bus. The newly renovated rooms reflect the alpine lifestyle, and the hotel's wellness area invites you to relax. Enjoy our top-pampering package with all-inclusive options. As true Tyroleans, we are not only hosts but also passionate hiking guides. Explore the beauty of our mountain landscape with us and benefit from our wonderful hiking tips.





**Private Chalets hosted by  
Kaluma Ski**

Andy Butterworth  
6580 St. Anton am Arlberg  
T. +44 1730 260 263  
enquiries@kalumaski.com  
www.kalumaski.com

Kaluma Ski specializes in exclusive, luxury, private chalet holidays, offering bespoke experiences and excellent service in the stunning resort of St. Anton and throughout the Arlberg. With 25 years of operational experience in St Anton, we provide exceptional service, stunning private and fully catered chalets along with tailored itineraries. Our in-resort concierge ensures a seamless and unforgettable stay, catering to private, family and corporate needs. We enjoy a very international clientele. Our chalets can only be booked on an exclusive basis and include private chefs, hosts and drivers.



Winter

Summer

Number of chalets total

on request

on request

6 chalets (for 6-24 persons)

## Hotel Kösslerhof

Fam. Kössler  
Mooserweg 1  
6580 St. Anton am Arlberg  
T. +43 5446 2918  
info@koessler-hof.com  
www.koessler-hof.com



Contemporary elegance meets typical Alpine magic in a refreshing manner. Our new 4\* Hotel Kösslerhof nestles between the ski pistes and the hiking trails in St. Anton. It is just a short walk to ski piste no. 50 and many different trails. The 16 lovingly designed, high quality rooms, as well as our panoramic sauna area with roof terrace, offer wonderful views of the surrounding mountains.

Winter	Summer	Number of rooms total
on request	on request	16 rooms

## Hotel Rosa Canina \*\*\*S

Philipp Genewein  
Untere Nassereinerstraße 39  
6580 St. Anton am Arlberg  
T. +43 5446 2175  
hotel@rosacanina.at  
www.rosacanina.at



Small enough to retain its familiar character, big enough to feature every comfort. The first 3-star superior hotel in St. Anton and proud to be a bit different: personal, cosy, with our own style. At Rosa Canina everybody feels at home. The Rosa Canina is located just outside of the bustling town centre, at the sunniest spot in all of St. Anton am Arlberg. Still in the centre of all the action: a 5-min walk to the ski lift, and a 10-min walk to the centre of town. We spoil our guests with a rich breakfast buffet and with an afternoon snack buffet with specialities from our region.

Winter	Summer	Number of rooms total
on request	on request	15 rooms



# Hotel-Gasthof Freisleben \*\*\*

Fam. Klimmer  
Arlbergstraße 8  
6580 St. Anton am Arlberg  
T. +43 664 88 38 56 36  
gasthof-freisleben@st-anton.at  
www.hotel-freisleben.at



Winter	Summer
on request	on request

The Hotel-Gasthof Freisleben in St. Anton am Arlberg combines tradition & modernity. In a picturesque location on the edge of the forest, enjoy the silence and a magnificent view. At Hotel-Gasthof Freisleben you will stay in accommodation with llama duvets, cable TV, a seating area and a bathroom. Most of the accommodations have a balcony or terrace and are allergy-friendly. Half-board includes breakfast with homemade products, such as jams and bacon, and a 4- to 5-course dinner. Special diet menus are available on request.

Number of rooms total
20 rooms (comfort rooms, apartments or single rooms)

# Hotel Pettneuerhof \*\*\*

Fam. Steiner  
Steinig 207  
6574 Pettneu am Arlberg  
T. +43 5448 8391  
info@pettneuerhof.at  
www.pettneuerhof.at



Winter	Summer
on request	on request

The family-run Hotel Pettneuerhof enjoys a quiet location 5 km from the center of St. Anton am Arlberg. It features a spa area with a sauna and a steam bath for relaxation. The ski bus stops 80 m away. Most rooms have a mountain-view balcony and all feature a private bathroom and cable TV. Free Wi-Fi is available in the entire building. In summer, kids can have fun on the playground and you can unwind on the summer terrace of the Hotel Pettneuerhof. Typical Austrian specialties based on local products, international cuisine and a wide range of selected wines are offered in the restaurant.

Number of rooms total
5 single rooms 25 double rooms 8 rooms in the guest house

## Hotel Andino

Andreas Wasle  
Arlbergstraße 61  
6580 St. Anton am Arlberg  
T. +43 5446 30 39 0  
info@andinohotel.at  
www.andinohotel.at



Our Hotel Andino\*\*\*\* stands for peace and cosiness, for relaxation, serenity as well as fun and joy in skiing & plays with the fusion of two mountain worlds: Tyrol and Peru.

In the approx. 35 m² comfort rooms, it's not just the exotic names that arouse curiosity, the comfortable furnishings and the proximity to nature leave nothing to be desired: Old larch wood flooring, soft alpaca carpets from Peru, balcony with a view, large bathroom, box-spring beds of the highest quality, fold-out sofa bed, minibar, tea & coffee bar, Finnish sauna and infrared cabin, free car park...

Winter	Summer	Number of rooms total
on request on allotment	on request on allotment	16 double rooms

## Skihotel Galzig

Fam. Alber  
Hannes Schneider Weg 5  
6580 St. Anton am Arlberg  
T. 43 5446 42770  
info@skihotelgalzig.at  
www.skihotelgalzig.at



The cosy and tastefully furnished Skihotel Galzig is located only a few steps from the valley station of the Galzibahn cable car and the pedestrian zone of St. Anton am Arlberg. An ideal location, surrounded by majestic mountains and unspoilt nature, combined with contemporary living, will make your holiday a unique experience.

Winter	Summer	Number of rooms total
on request	on request on allotment	21 rooms

## Ullrhaus

Fam. Alber  
Alte Arlbergstraße 2  
6580 St. Anton am Arlberg  
T. +43 5446 35200  
info@ullrhaus.at  
www.ullrhaus.at

The brand new Ullrhaus is located in the heart of St. Anton am Arlberg directly between the Galzig and Rendl cable cars in a prime location and is only a few meters away from St. Anton's ski area. 40 rooms and suites offer every comfort. The unique design and interior concept combines Scandi Chic with alpine influences and exciting patterns. Wellbeing is our top priority.



Winter	Summer	Number of rooms total
on request	on request on allotment	40 rooms and suites

## Pension 'Der Steinbock'

Barbara und Mathias Kometer  
St. Jakober Dorfstraße 11  
6580 St. Anton am Arlberg  
T. +43 5446 2243  
hotel@dassonnbichl.at  
www.dassonnbichl.at

Our B&B "Der Steinbock" in St. Anton is over 300 years old and offers guests a traditional domestic atmosphere. Here, you can enjoy the ambiance of a classic rural "Bauernhaus" and experience Tyrolean culture close up. You're free to spend your vacation at Der Steinbock however you like, according to your tastes.



Winter	Summer	Number of rooms total
Channel Connect / GDS	Channel Connect / GDS	14 rooms



## Arlberg Boutique Hotel

Fam. Bradley-Scherl  
Pettneu Nr. 117  
6574 Pettneu am Arlberg  
T. +43 650 813 38 86  
info@edelweiss-pettneu.at  
www.edelweiss-pettneu.at



The Arlberg Boutique Hotel is a family-run hotel on the Arlberg in the Tyrolean mountains. We are young, dynamic, welcoming and always good for a surprise. In any case, you are guaranteed not to find a hackneyed hotel atmosphere or a gala dinner with stiff penguins here. Locals and guests should enjoy a relaxed, informal atmosphere and feel at home.

Winter	Summer	Number of rooms total
on request	on request	Single room Double room Multi-bed room / flat

## Hotel-Garni Albona

Kristin Huber  
Alte Arlbergstraße 24  
6580 St. Anton am Arlberg  
T. 43 664 353 44 30  
info@albona.at  
www.albona.at



Stylish ambience and dignified comfort await you at Hotel Albona, from double rooms to premium flats. You don't need a car or bus, the ski lifts and the village centre are just a 2-3 minute walk away. Spacious wellness area with Finnish sauna, steam bath, cold air room and relaxation room. Free ski and boot depot directly at the ski lift for your convenience. Free parking in the adjacent underground car park or in the carport at the hotel. Your holiday destination with tradition and personal service (English-, French-, Italian-speaking)

Winter	Summer	Number of rooms total
on request	/	Single room Double room Multi-bed room / flat

## Appartement s'Schmuckkastli

Fam. Bradley-Scherl  
Dorf 58  
6574 Pettneu am Arlberg  
T. +43 650 813 38 86  
[info@schmuckkastli.com](mailto:info@schmuckkastli.com)  
[www.schmuckkastli.com](http://www.schmuckkastli.com)



Tradition and innovation meet in our Schmuckkastli and thus form the foundation for a special holiday in the Alps. It is very important to us that you feel at home with us. Our hospitality and family atmosphere should therefore also be felt in the rooms, which have been furnished with great attention to detail.

Winter	Summer	Number of rooms total
on request	on request	2 flats for 2-4 persons 1 flat for 2-5 persons 2 flats for 6-8 persons

## Apart Gabriele

Mag. Gabriele Weiskopf-Klimmer  
Arlbergstraße 1  
6580 St. Anton am Arlberg  
T. +43 5446 3783  
[info@apart-gabriele.at](mailto:info@apart-gabriele.at)  
[www.apart-gabriele.at](http://www.apart-gabriele.at)



Unwind in the heart of the Arlberg region! Our Apart Gabriele is situated in a very sunny location in the district of Stadle with a marvellous panoramic view. All flats are fully equipped and furnished with local stone pine and spruce wood. In our wellness area you will find a stone pine sauna, a steam bath & a Physiotherm infrared cabin as well as a relaxation area. There is also a ski and boot drying room in the house, as well as a free ski depot at the Rendlbahn (Intersport Pangratz). We have a large car park and the ski/village bus stop is only 15m away!

Winter	Summer	Number of rooms total
on request	on request	10 flats

## Arlen Lodge Hotel

Fam. Annalisa Falch-Wieser  
Nassereinerstraße 49  
6580 St. Anton am Arlberg  
T. +43 5446 42 56 6  
hotel@arlenlodge.at  
www.arlenlodge.at



Winter	Summer	Number of rooms total
on request on allotment	on request on allotment	18 rooms/suites

Welcome to the Arlen Lodge, a peaceful alpine retreat. Just 400 metres from the Nassereinerbahn cable car, our hotel offers easy access to the slopes. Our rooms and flats are designed in authentic alpine style and offer a warm and welcoming atmosphere.

After an exciting day on the slopes, relax in our wellness area, which includes a sauna, steam bath and infrared sauna.

Our friendly team is always on hand with local tips and recommendations to help you get the most out of your stay.

## Apart Sailers

Manuela Hauser-Sailer  
Arlbergstraße 11  
6580 St. Anton am Arlberg  
T. 43 5446 3516  
info@sailers-apart.com  
www.sailers-apart.com



Winter	Summer	Number of rooms total
on request	on allotment	1 app. - Standard occ. 2 persons with 1 bedroom 1 app. - Standard occ. 4 persons with 2 bedrooms 2 x app. - Standard occ. 6 persons with 3 bedrooms

Our flats are a place to relax and are located above the village centre - in a wonderful panoramic location. 3 of our brand new apartments are equipped with a south-west facing terrace or loggia including a private outdoor sauna. Our absolute highlight is the jacuzzi on the roof terrace! The cable cars, shops, restaurants and IT locations are just a short walk away or can be reached in 5 minutes with the free ski and hiking bus or by taxi. The bus stop is right next to our house. Free ski and ski depot right next to the Galzigbahn included.



## Appartements Daniela

Fam. Jennewein  
 Auweg 2  
 6580 St. Anton am Arlberg  
 T. +43 676 700 16 32  
[daniela@apartment-st-anton.at](mailto:daniela@apartment-st-anton.at)  
[www.apartment-st-anton.at](http://www.apartment-st-anton.at)



Our flat house is located in the heart of St. Anton, just a few minutes' walk from the Galzigbahn, Nassereinbahn and Fangbahn cable cars. The Arlberg WellCom leisure and wellness centre with swimming pool, saunas and fitness studio as well as the pedestrian zone of St. Anton with its many restaurants and shops are within easy walking distance.

We have two comfortable flats: one for 2-4 people and one for 4-5 people - both with their own balcony.

Winter	Summer	Number of rooms total
on request on allotment	on request on allotment	1 flat for 2-4 persons 1 flat for 4-5 persons





## Arrival

# See you

For centuries, the region was difficult to access. Today, you can reach St. Anton am Arlberg quickly and easily via the motorway from the west and east or travel comfortably and safely directly by train to the centrally located railway station.

### Arriving by train

#### Train station St. Anton am Arlberg

For further information and rates see [www.oebb.at](http://www.oebb.at)

### Arriving by plane

Innsbruck (A)	ca. 100 km
Zürich (CH)	ca. 200 km
München (D)	ca. 230 km
Friedrichshafen (D)	ca. 130 km
Memmingen (D)	ca. 180 km
Mailand (I)	ca. 330 km

#### Airport transfer

##### Arlberg Express

[www.arlbergexpress.com](http://www.arlbergexpress.com)

T. +43 (0)5582 226

##### Four Seasons Travel

[www.tirol-taxi.at](http://www.tirol-taxi.at)

T. +43 (0)512 5841570









Status: November 2024. Subject to alteration! All details are without guarantee!

Responsible for the content: Tourismusverband St. Anton am Arlberg, Layout: Edi Pfeifer,

Images: TVB St. Anton am Arlberg, Patrick Bätz, dieWEST, Christoph Schöch, Daniel Köll, Lucas Tiefenthaler, Christian Schranz, Karin Pasterer, Eva Beer, Roman Huber, Büro Maisengasse



**TOURISM ASSOCIATION  
ST. ANTON AM ARLBERG**

Dorfstraße 8, 6580 St. Anton am Arlberg

T. +43 (0)5446 22690 · [info@stantonamarlberg.com](mailto:info@stantonamarlberg.com)

[www.stantonamarlberg.com](http://www.stantonamarlberg.com)

**Office in Pettneu**

Dorf 150, 6574 Pettneu am Arlberg

T. +43 (0)5448 8221

[pettneu@stantonamarlberg.com](mailto:pettneu@stantonamarlberg.com)

**Office in Flirsch**

Dorf 113a, 6572 Flirsch

T. +43 (0)5447 5564

[flirsch@stantonamarlberg.com](mailto:flirsch@stantonamarlberg.com)

